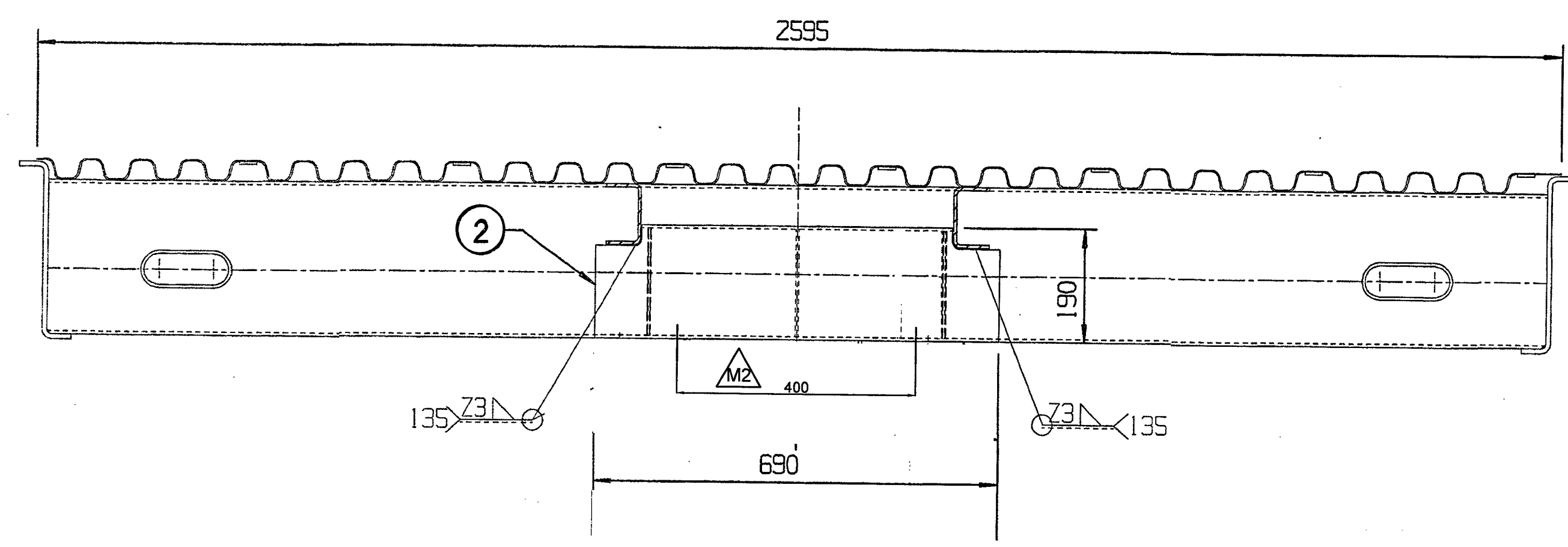
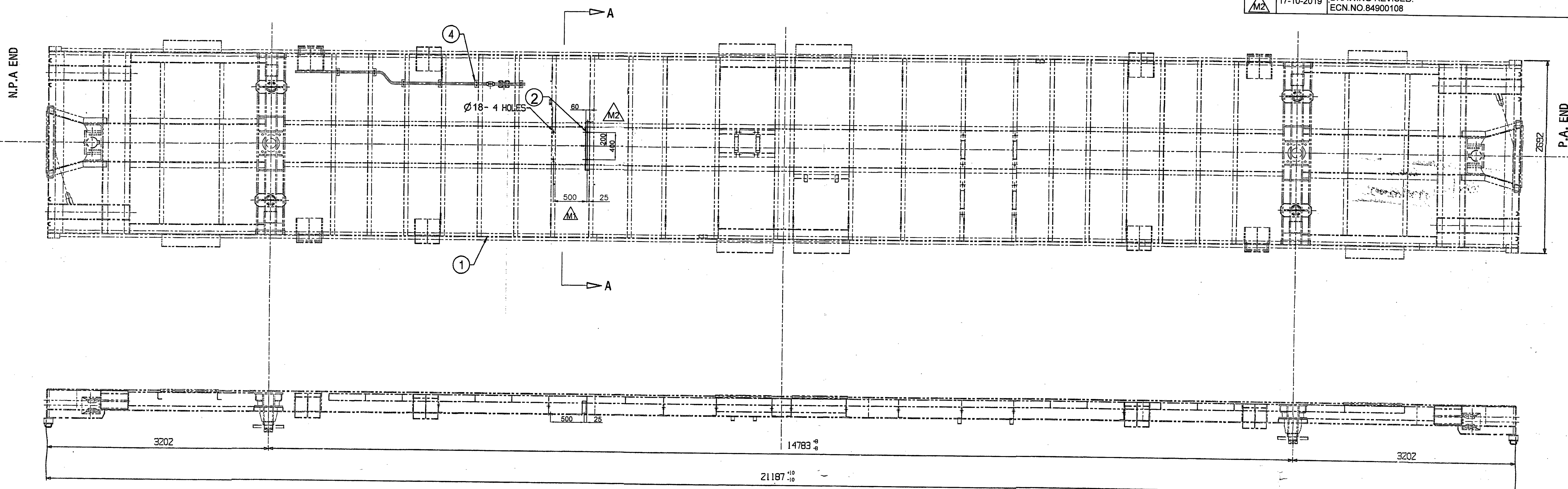


ALT. NO	ALT. DATE	ZONE	ALTERATIONS	AUTHORITY
NIL	NIL	NIL	NIL	NIL
M1	04.08.2018		IN DRG. DIM 500 & 500 WAS 526 & 428 RESPLY. HOLE DIA 18 WAS 21. IN SEC -AA DIM 500 & 199 WAS 526 & 225 RESPECTIVLY P2 LOCATION CHANGED. & P3 DELETED. ECN No. 84900025	KHS M.R.
M2	17-10-2019		DRAWING REVISED. ECN.NO.84900108	KJ SMR



CONTROLLED COPY NO. 1

NOTE :- 1. ALL HOLES ARE TO BE JIG DRILLED.
2. DIM. MARKED IN BLOCK ARE TO MAINTAINED STRICTLY.

ANY MANUAL ALTERATION SHALL AUTOMATICALLY RENDER THIS DRAWING INVALID.
FOR UNTOLERANCED DIMENSIONS REFER MDG0008

DETAIL DRGS STARTING WITH "LI" ARE INTERNAL REFERENCE LISTS ONLY AND ARE NOT FOR ISSUE.

DATE OF FIRST ISSUE 28/10/2004 CGM BY

△	4	ARRGT. OF BRACKETS ON UNDERFRAME FOR AIR SUSPENSION		1	ET11136	NIL	NIL
	3	BRACKET FOR RESERVOIR		2	ET11133	NIL	NIL
	2	CHANNEL COMPLETE		1	ET11134	NIL	NIL
	1	UNDERFRAME ARRANGEMENT		1	ET11100	NIL	NIL
WELD LENGTH	ITEM	DESCRIPTION & DIMENSIONS		QPASSLY	DETAIL DRG	MATL. & SPEC.	REMARKS
NIL	M	GROUP	UNDERFRAME	SUPERSEDES:		NIL	
WEIGHT	FILE	\\Nas\shell\prdp\et11138.prt (2D)					
6350.0	KG	UNDERFRAME ARRANGEMENT FOR					
S. AREA		MEMU/TC2 WITH AIR SUSPENSION					
NIL	M ²	RAIL COACH FACTORY, KAPURTHALA					
LENGTH/DIA		INDIAN RAILWAYS STANDARD					
NIL	M	PL NO. NIL					
WIDTH/THICK.		DRG.NO. ET11138/M2					
NIL	M	DATE OF FIRST ISSUE 28/10/2004					
HEIGHT		CGM BY					
NIL	M	DATE OF FIRST ISSUE 28/10/2004					